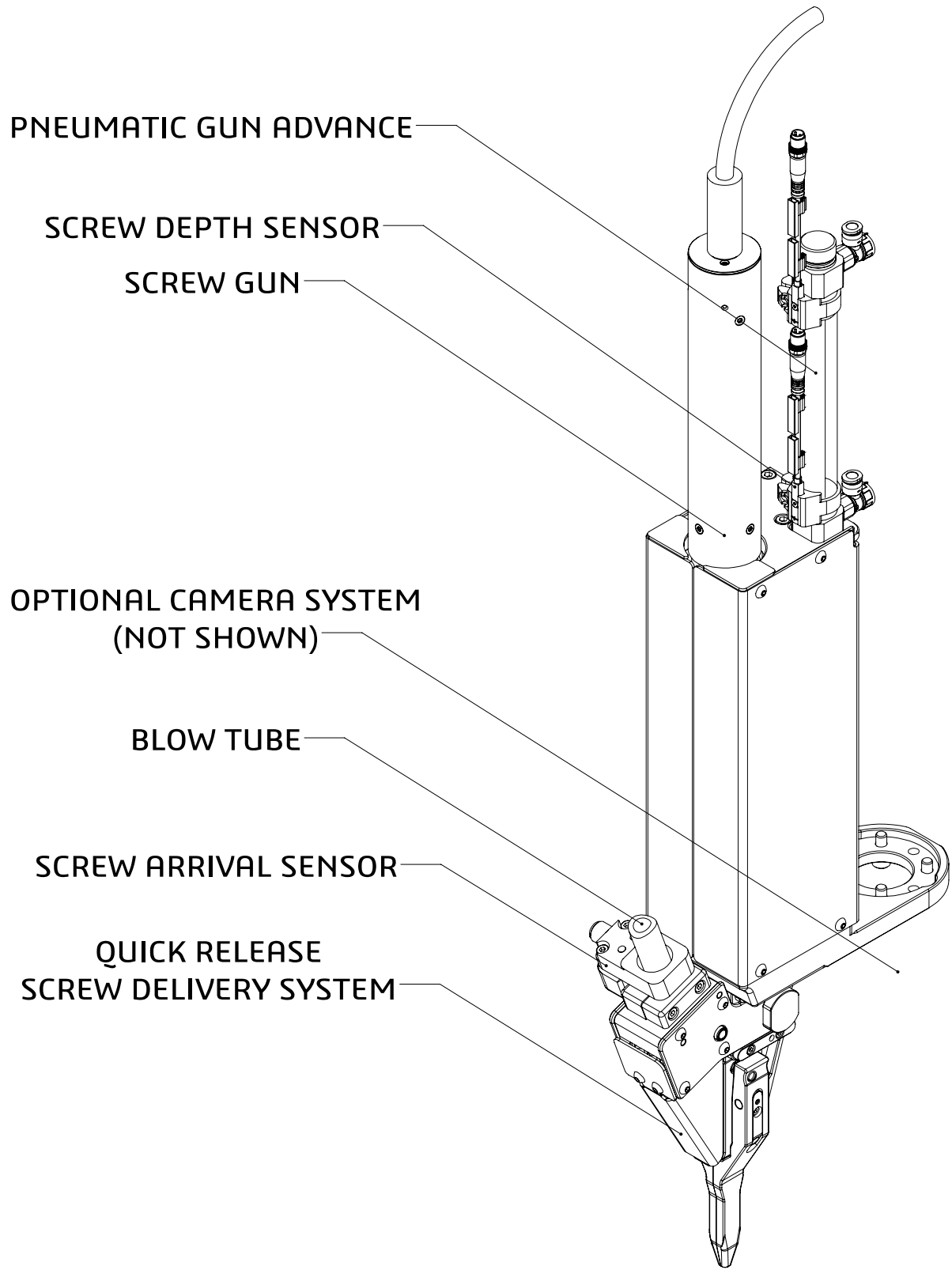


# Table of Contents

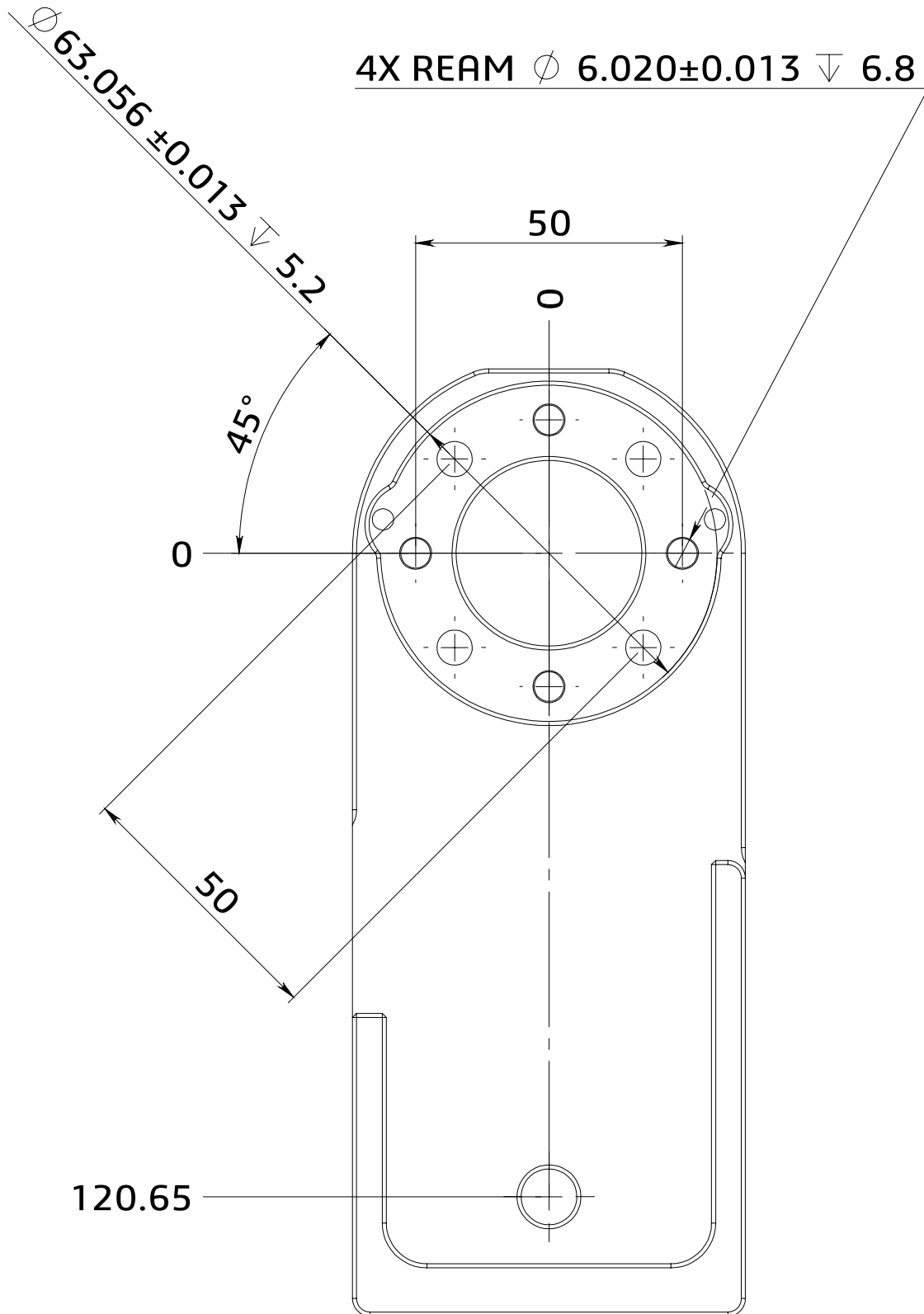
1.0 Overview .....	3
2.0 Technical Specifications .....	4
3.0 Camera System Options .....	6
3.1 7530-010-0000 Screw Gun Camera Option 1 Specifications.....	8
3.2 7530-010-0000 Screw Gun Camera Option 2 Specifications.....	9
4.0 Diagrams .....	10
4.1 7530-010-0000 Screw Gun.....	10
4.2 7530-010-1000 Driver Carriage .....	14
4.3 7530-010-3000 Quick Release.....	16
4.4 7530-010-3100-000 Screw Tube Assembly .....	18
4.5 7530-010-8000 Camera System.....	20
4.6 7530-010-8100 Camera System.....	22

# 1.0 Overview

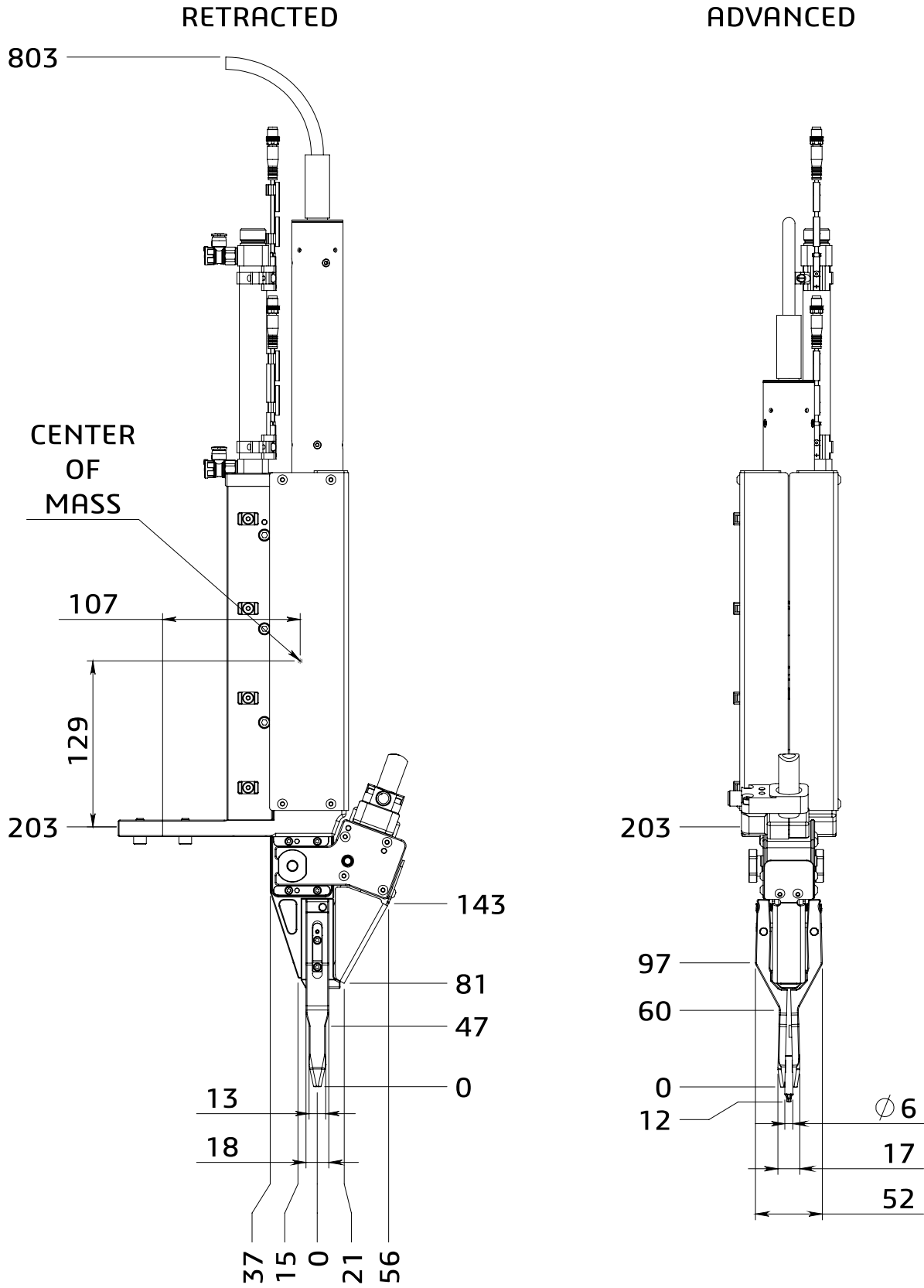


## 2.0 Technical Specifications

- Weight: 6kg

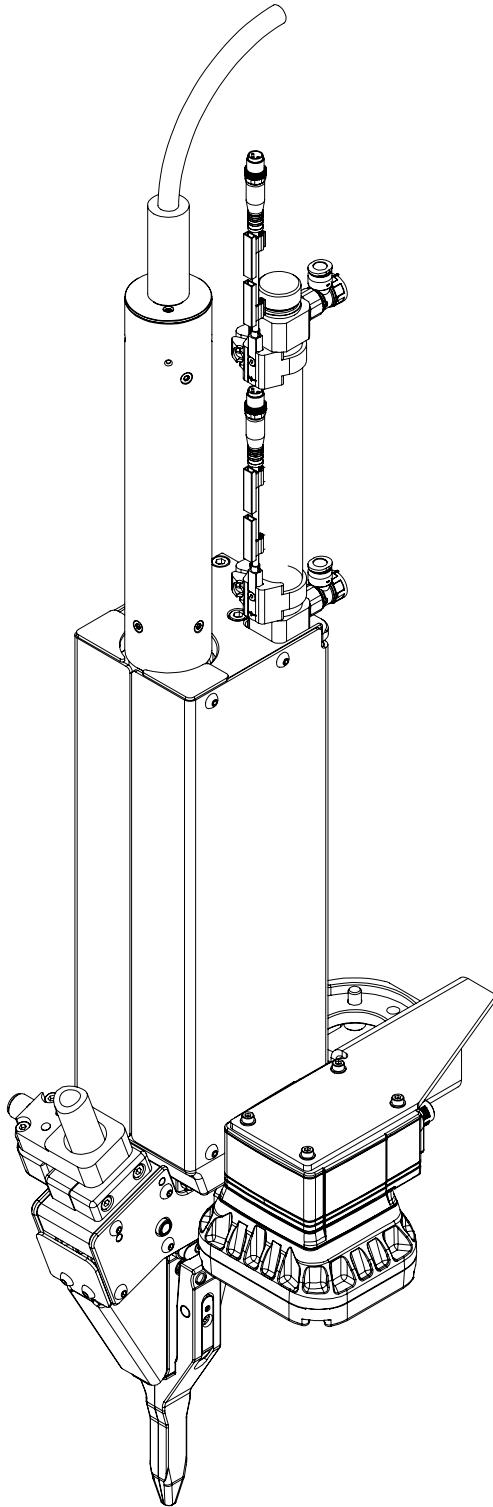


# Technical Specifications

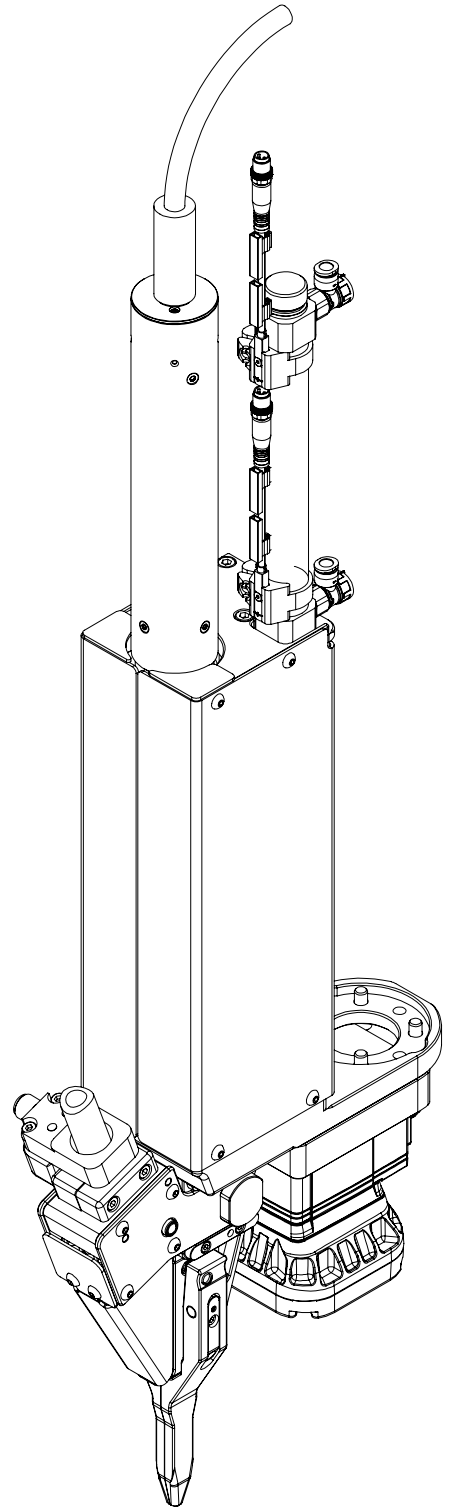


### 3.0 Camera System Options

CAMERA OPTION 1

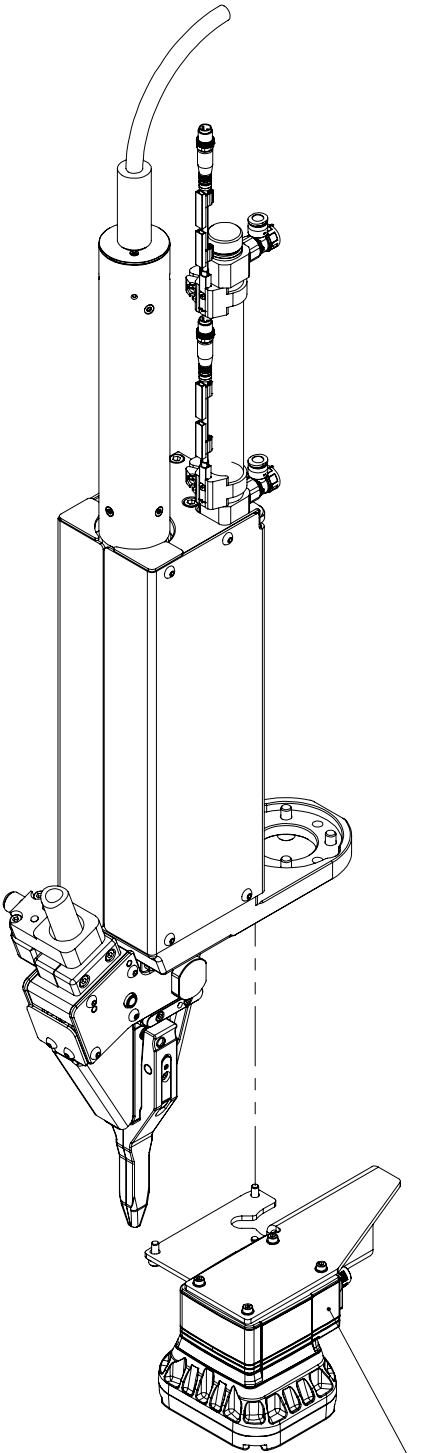


CAMERA OPTION 2



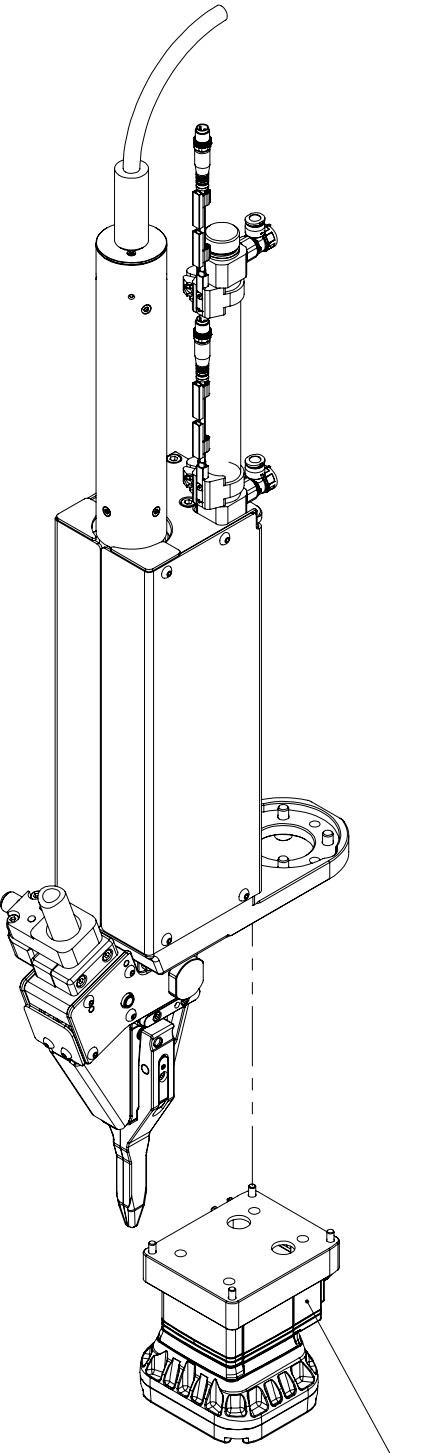
# Camera System Options

## CAMERA OPTION 1



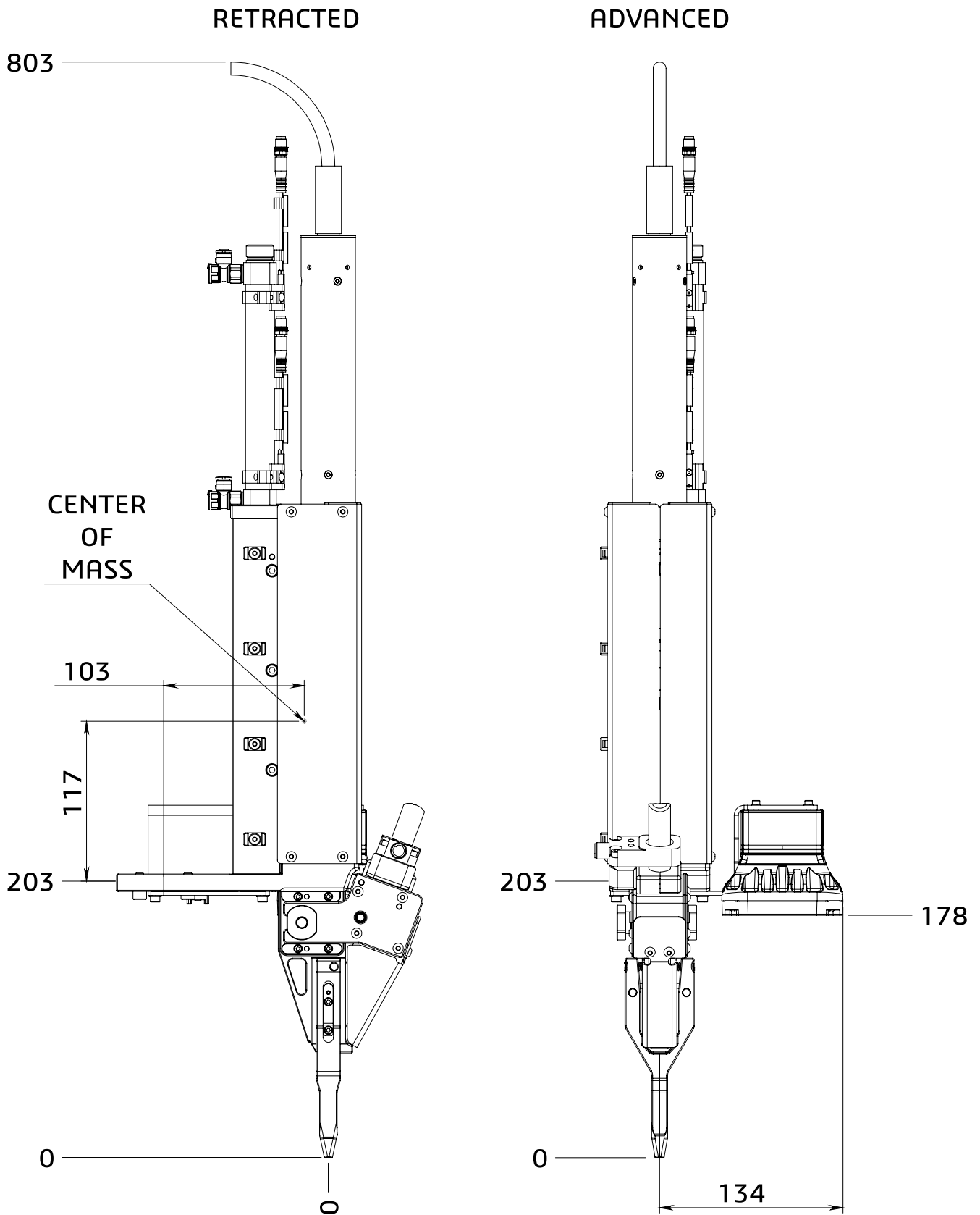
7530-010-8000 CAMERA SYSTEM

## CAMERA OPTION 2



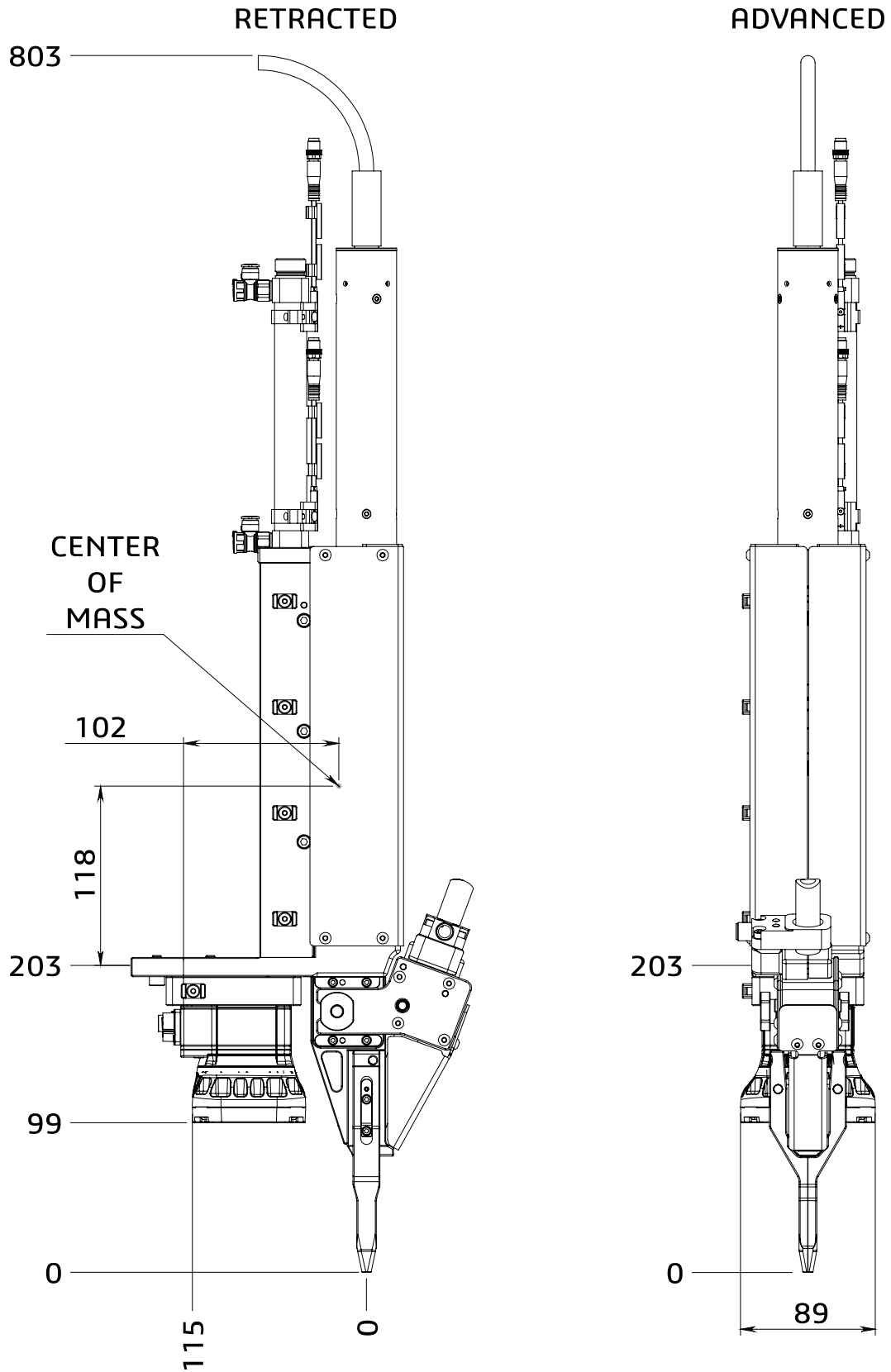
7530-010-8100 CAMERA SYSTEM

### 3.1 7530-010-0000 Screw Gun Camera Option 1 Specifications





### 3.2 7530-010-0000 Screw Gun Camera Option 2 Specifications



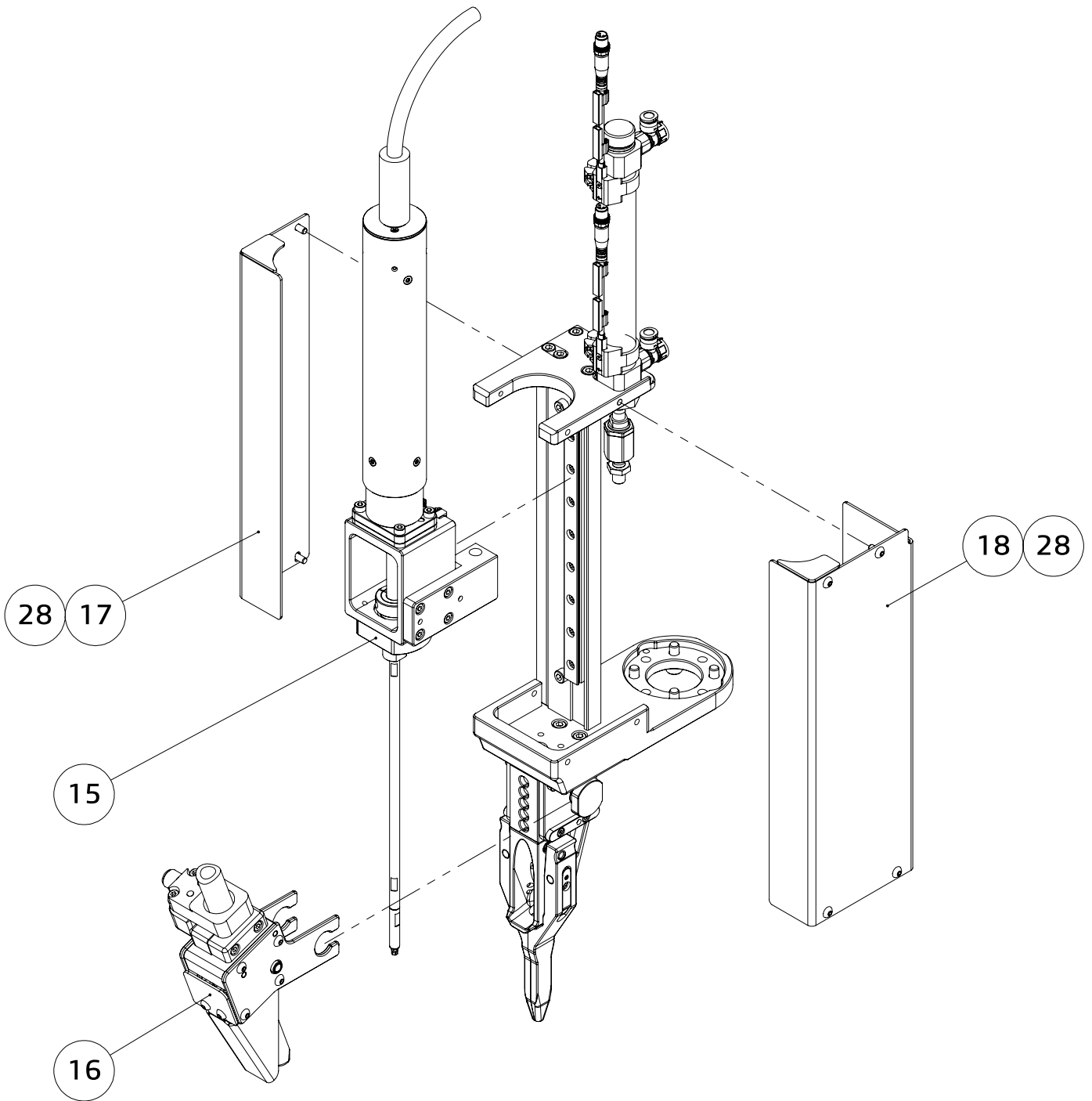
## 4.0 Diagrams

### 4.1 7530-010-0000 Screw Gun

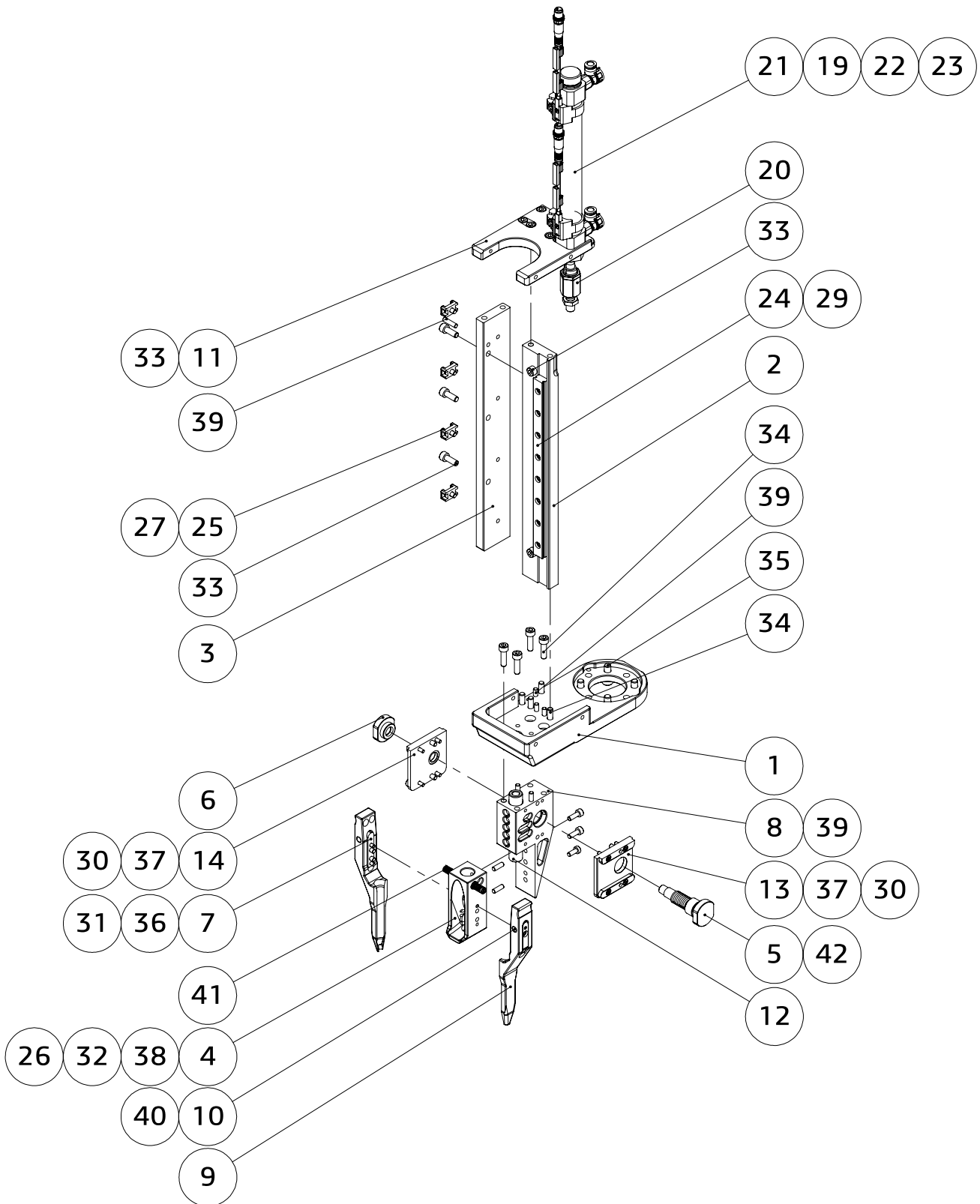
ITEM	QTY	PART NUMBER	DESCRIPTION	MANUFACTURER	RECOMMENDED SPARE
1	1	7530-010-0000-001	ROBOT MOUNTING PLATE	PROTO MACHINE	
2	1	7530-010-0000-003	RAIL PLATE	PROTO MACHINE	
3	1	7530-010-0000-004	SIDE BRACE	PROTO MACHINE	
4	1	7530-010-0000-006	SCREW RECEIVER	PROTO MACHINE	
5	1	7530-010-0000-007	LOCKING PIN	PROTO MACHINE	
6	1	7530-010-0000-008	LOCKING CAP	PROTO MACHINE	
7	2	7530-010-0000-010	FINGER MOUNT	PROTO MACHINE	
8	1	7530-010-0000-011	SUBSTRUCTURE	PROTO MACHINE	
9	2	7530-010-0000-013	JAW	PROTO MACHINE	
10	2	7530-010-0000-014	FINGER PIVOT	PROTO MACHINE	
11	1	7530-010-0000-015	TOP PLATE	PROTO MACHINE	
12	1	7530-010-0000-017	BIT GUIDE	PROTO MACHINE	
13	1	7530-010-0000-019	RIGHT SIDE GLIDE	PROTO MACHINE	
14	1	7530-010-0000-020	LEFT SIDE GLIDE	PROTO MACHINE	
15	1	7530-010-1000	DRIVER CARRIAGE	PROTO MACHINE	
16	1	7530-010-3000	QUICK RELEASE	PROTO MACHINE	
17	1	7530-010-6100-000	GUARD WELDMENT	PROTO MACHINE	
18	1	7530-010-6200-000	GUARD WELDMENT	PROTO MACHINE	
19	2	175095	SENSOR MOUNTING CLAMP, 20MM BORE	FESTO	
20	1	2062	FLOATING JOINT, M8X1.25 THREAD	FESTO	
21	1	5225843	CYLINDER, 20MM BORE, 125MM STROKE	FESTO	
22	2	574334	SENSOR, M8 3PIN, PNP, 0.3M L	FESTO	
23	2	8068726	VFOE-LE-T-G18-Q6 FLOW CONTROL VALVE	FESTO	
24	1	6725K531	LINEAR RAIL, 12X200	MCMMASTER CARR	
25	4	7566K74	4MM SCREW CABLE HOLDER	MCMMASTER CARR	
26	1	90327A113	M4X0.7 BY 10 LHCS-CZN	MCMMASTER CARR	

ITEM	QTY	PART NUMBER	DESCRIPTION	MANUFACTURER	RECOMMEDED SPARE
27	4	91306A659	M4X0.7 BY 6 BHCS-CZN	MCMaster CARR	
28	8	91352A121	M4X0.7 BY 8 BHCS-BZN	MCMaster CARR	
29	10	91502A103	M3X0.5 BY 8 SHCS-BZN	MCMaster CARR	
30	8	91502A104	M3X0.5 BY 10 SHCS-BZN	MCMaster CARR	
31	2	91502A105	M3X0.5 BY 12 SHCS-BZN	MCMaster CARR	
32	2	91502A125	M4X0.7 BY 12 SHCS-BZN	MCMaster CARR	
33	9	91502A145	M5X0.8 BY 14 SHCS-BZN	MCMaster CARR	
34	8	91502A147	M5X0.8 BY 18 SHCS-BZN	MCMaster CARR	
35	4	91502A164	M6X1.0 BY 14 SHCS-BZN	MCMaster CARR	
36	4	91595A150	M4 BY 8 DP	MCMaster CARR	
37	4	91595A152	M4 BY 10 DP	MCMaster CARR	
38	2	91595A155	M4 BY 12 DP	MCMaster CARR	
39	6	91595A161	M4 BY 16 DP	MCMaster CARR	
40	2	92605A097	M3X0.5 BY 3 FPSS-SS	MCMaster CARR	
41	2	9657K328	SPRING, COMPRESSION, .25 OD, 1.25 L, .026 WIRE	MCMaster CARR	
42	1	9657K691	0.480 OD, 0.035 WD, 1.25 L CS-CZN	MCMaster CARR	

# 7530-010-0000 Screw Gun



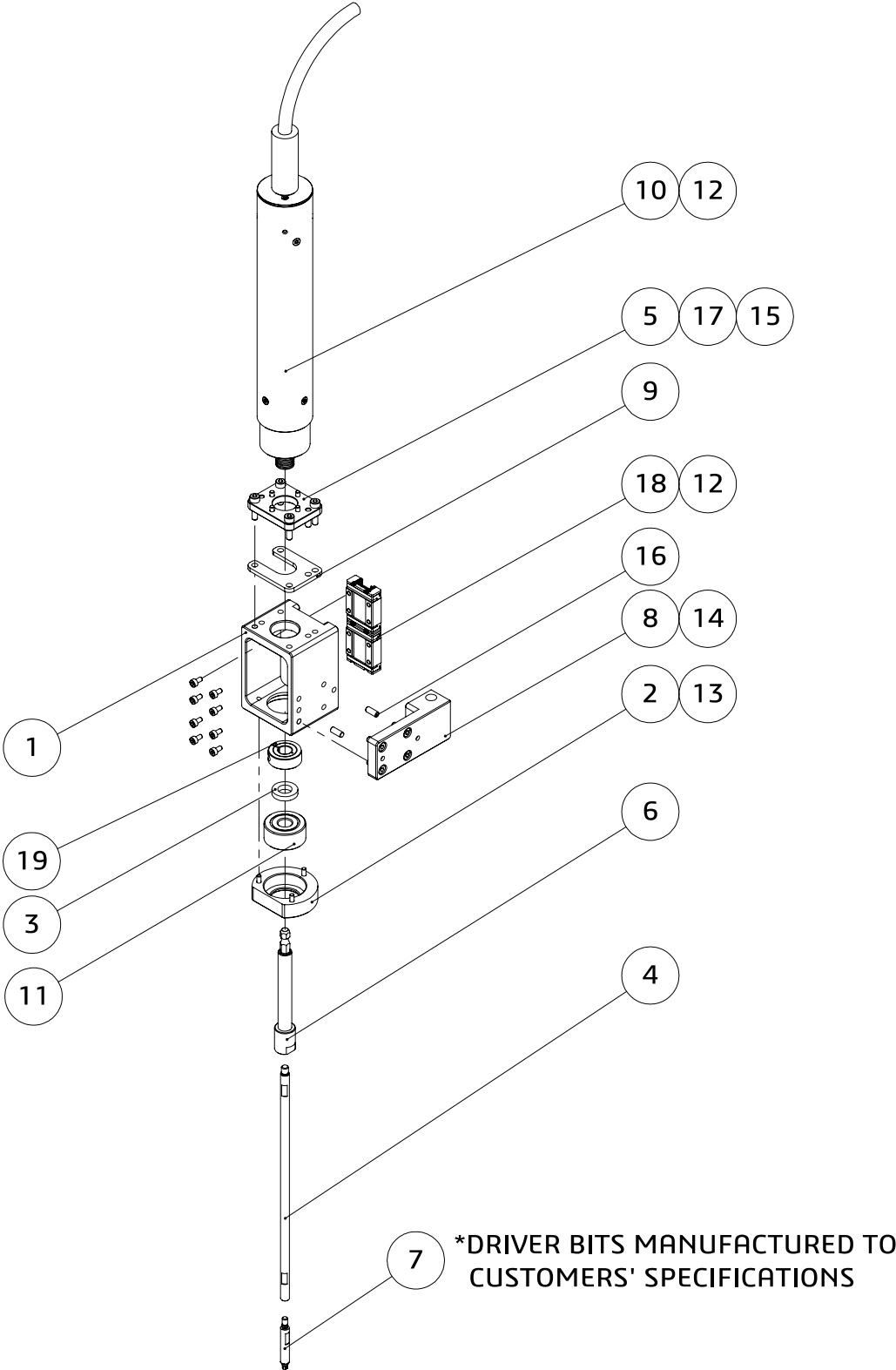
# 7530-010-0000 Screw Gun



## 4.2 7530-010-1000 Driver Carriage

ITEM	QTY	PART NUMBER	DESCRIPTION	MANUFACTURER	RECOMMEDED SPARE
1	1	7530-010-1000-001	CARRIAGE BLOCK	PROTO MACHINE	
2	1	7530-010-1000-002	BEARING RETAINER	PROTO MACHINE	
3	1	7530-010-1000-003	BEARING COLLAR	PROTO MACHINE	
4	1	7530-010-1000-004	DRIVER EXTENSION	PROTO MACHINE	
5	1	7530-010-1000-005	KOLVER DRIVER MOUNT	PROTO MACHINE	
6	1	7530-010-1000-014	DRIVER ADAPTER	PROTO MACHINE	
7	1	7530-010-1000-016	DRIVER BIT, TORX, NON-VACUUM	PROTO MACHINE	
8	1	7530-010-1000-050	CYLINDER ADAPTER	PROTO MACHINE	
9	1	7530-010-1000-051	DRIVER SPACER	PROTO MACHINE	
10	1	KDS-6CA	DRIVER	KOLVER	
11	1	8828T211	10MM ID, SHIELDED ANGULAR CONTACT BEARING	MCMASTER CARR	
12	12	91502A102	M3X0.5 BY 6 SHCS-BZN	MCMASTER CARR	
13	3	91502A106	M3X0.5 BY 14 SHCS-BZN	MCMASTER CARR	
14	4	91502A124	M4X0.7 BY 10 SHCS-BZN	MCMASTER CARR	
15	4	91502A127	M4X0.7 BY 16 SHCS-BZN	MCMASTER CARR	
16	2	91595A152	M4 BY 10 DP	MCMASTER CARR	
19	1	9506T500	10MM SHAFT COLLAR	MCMASTER CARR	
17	2	91595A158	M4 BY 14 DP	MCMASTER CARR	
18	2	9184T713	LINEAR BEARING, 12MM, BLOCK STYLE	MCMASTER CARR	

# 7530-010-1000 Driver Carriage

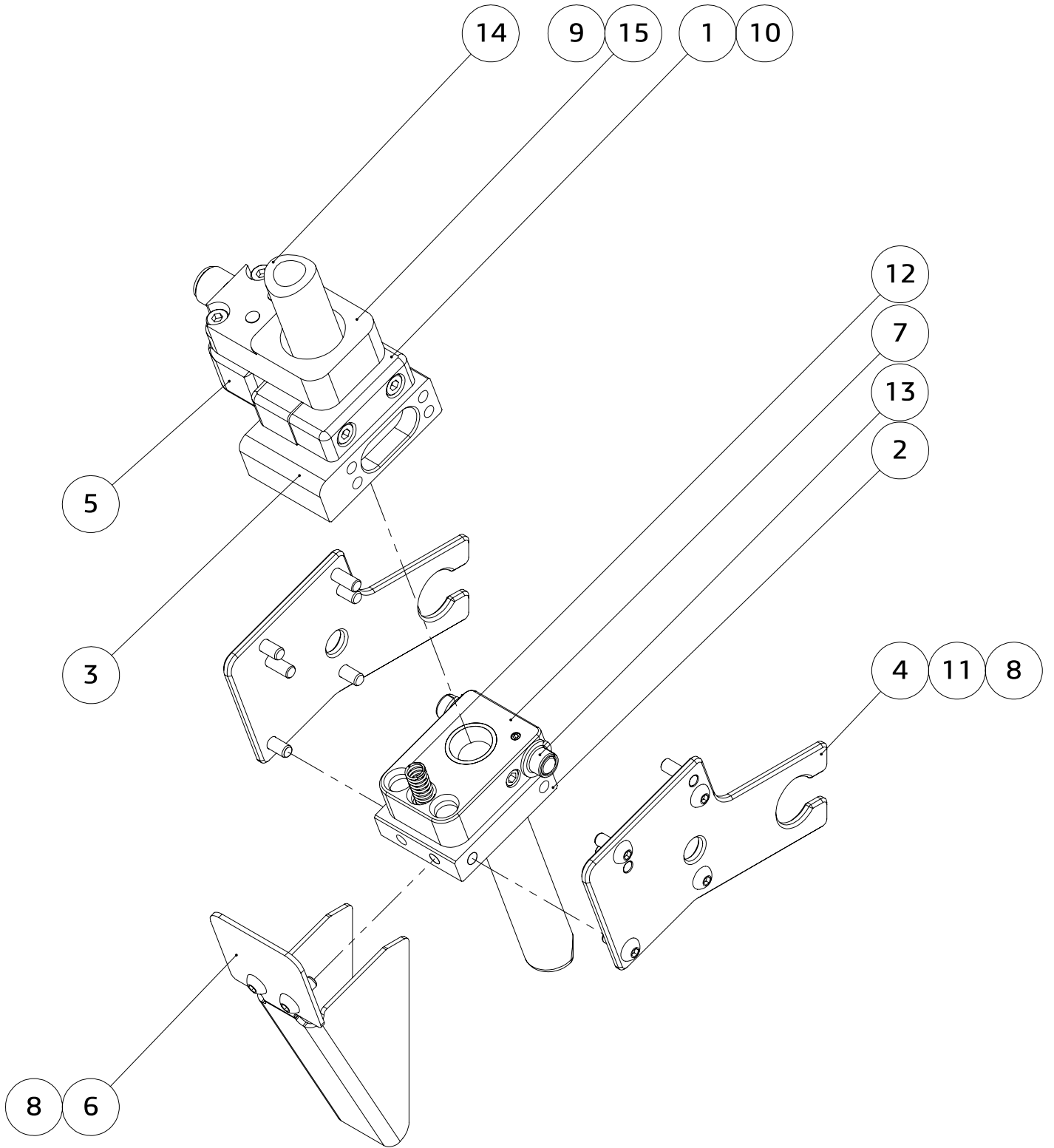


### 4.3 7530-010-3000 Quick Release

ITEM	QTY	PART NUMBER	DESCRIPTION	MANUFACTURER	RECOMMEDED SPARE
1	1	7530-010-3000-001	TUBE CLAMP	PROTO MACHINE	
2	1	7530-010-3000-002	SPACER	PROTO MACHINE	
3	1	7530-010-3000-003	TUBE HOLDER	PROTO MACHINE	
4	2	7530-010-3000-004	SIDE PLATE	PROTO MACHINE	
5	1	7530-010-3000-005	RING SENSOR BRACKET	PROTO MACHINE	
6	1	7530-010-3000-050	GUARD	PROTO MACHINE	
7	1	7530-010-3100-000	SCREW TUBE ASSEMBLY	PROTO MACHINE	
8	10	91352A122	M4X0.7 BY 10 BHCS-BZN	MCMaster CARR	
9	2	91502A126	M4X0.7 BY 14 SHCS-BZN	MCMaster CARR	
10	2	91502A132	M4X0.7 BY 35 SHCS-BZN	MCMaster CARR	
11	4	91595A155	M4 BY 12 DP	MCMaster CARR	
12	1	9657K328	SPRING, COMPRESSION, .25 OD, 1.25 L, .026 WIRE	MCMaster CARR	
13	2	MDZF6-5	BUSHING, SHOULDERED, MULTI-LAYER	MISUMI	
14	1	TU1610BU-20	TUBING, 16MM OD, 10MM ID, 20M L	SMC	
15	1	B120R-Q14-AP6X2-H1141	INDUCTIVE RING SENSOR	TURCK	



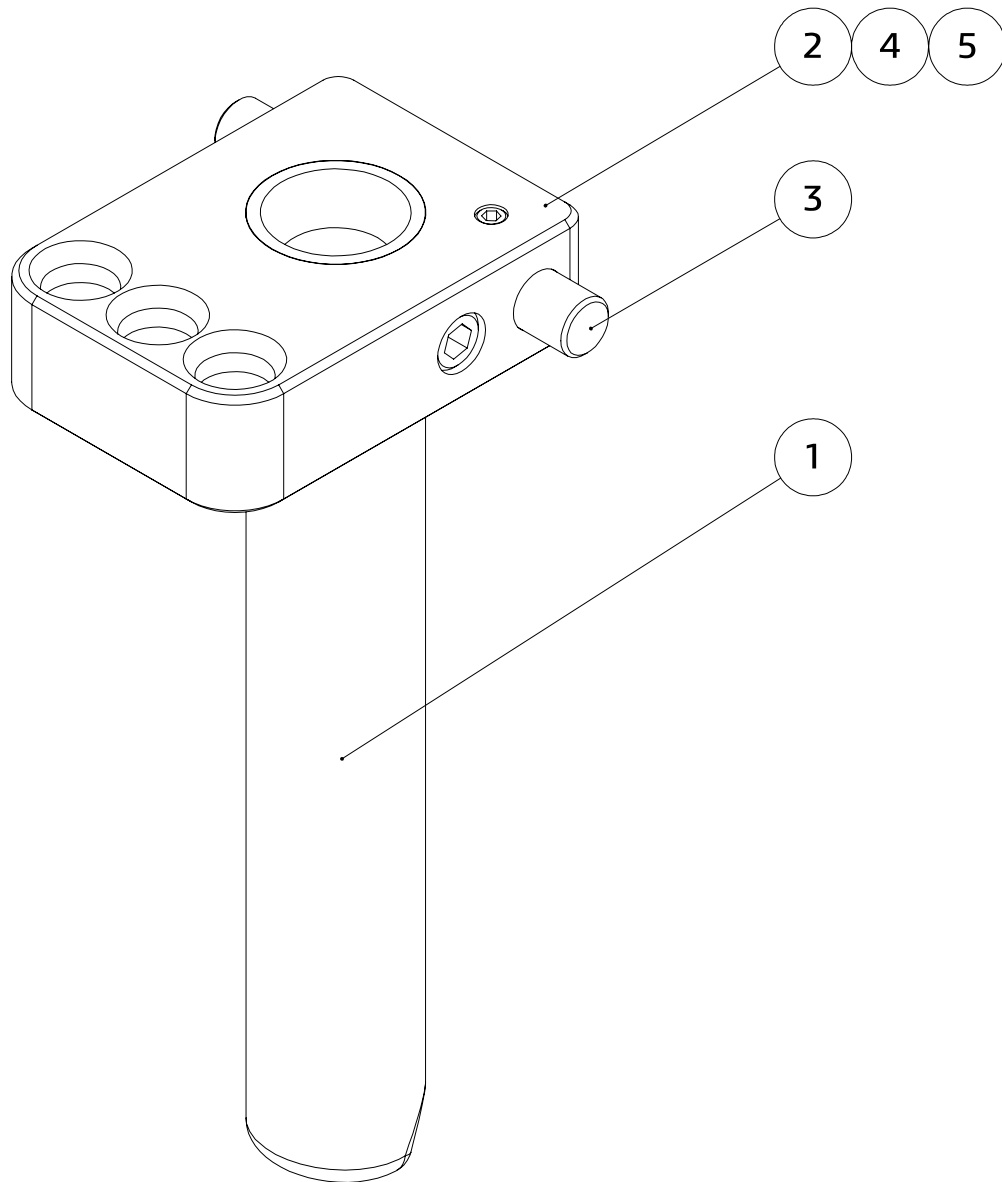
# 7530-010-3000 Quick Release



#### 4.4 7530-010-3100-000 Screw Tube Assembly

ITEM	QTY	PART NUMBER	DESCRIPTION	MANUFACTURER	RECOMMEDED SPARE
1	1	7530-010-3100-001	SCREW TUBE	PROTO MACHINE	
2	1	7530-010-3100-002	PIVOT BLOCK	PROTO MACHINE	
3	1	7530-010-3100-003	PIVOT PIN	PROTO MACHINE	
4	1	92605A098	M3X0.5 BY 4 FPSS-SS	MCMASTER CARR	
5	1	91390A127	M6X1.0 BY 8 UPSS-BO	MCMASTER CARR	

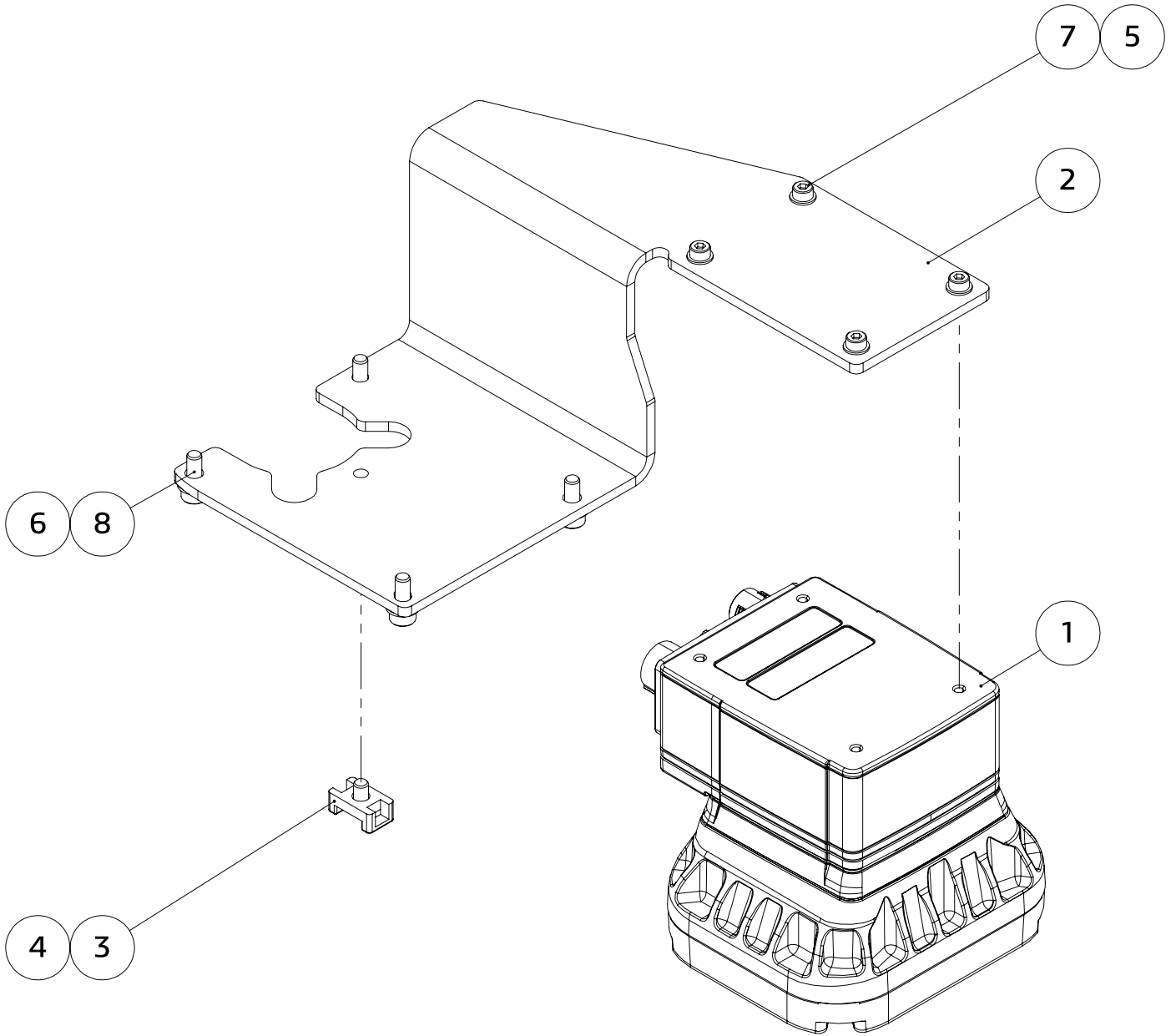
# 7530-010-3100-000 Screw Tube Assembly



#### 4.5 7530-010-8000 Camera System

ITEM	QTY	PART NUMBER	DESCRIPTION	MANUFACTURER	RECOMMEDED SPARE
1	1		CAMERA		
2	1	7530-010-8000-001	CAMERA BRACKET	PROTO MACHINE	
3	1	7566K74	4MM SCREW CABLE HOLDER	MCMaster CARR	
4	1	91306A659	M4X0.7 BY 6 BHCS-CZN	MCMaster CARR	
5	4	91455A330	M3 TW-CZN-G10.9	MCMaster CARR	
6	4	91455A340	M4 PW-CZN-G10.9	MCMaster CARR	
7	4	91502A102	M3X0.5 BY 6 SHCS-BZN	MCMaster CARR	
8	4	91502A124	M4X0.7 BY 10 SHCS-BZN	MCMaster CARR	

# 7530-010-8000 Camera System



#### 4.6 7530-010-8100 Camera System

ITEM	QTY	PART NUMBER	DESCRIPTION	MANUFACTURER	RECOMMEDED SPARE
1	1		CAMERA		
2	1	7530-010-0000-012	CAMERA MOUNT	PROTO MACHINE	
3	1	7566K74	4MM SCREW CABLE HOLDER	MCMaster CARR	
4	1	91306A659	M4X0.7 BY 6 BHCS-CZN	MCMaster CARR	
5	4	91502A102	M3X0.5 BY 6 SHCS-BZN	MCMaster CARR	
6	4	91502A129	M4X0.7 BY 20 SHCS-BZN	MCMaster CARR	

# 7530-010-8100 Camera System

